

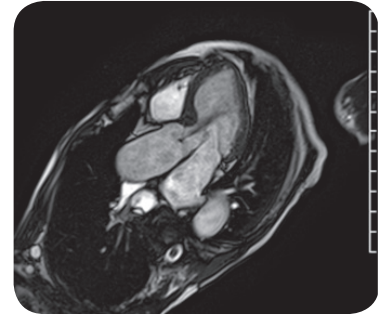
ACC/ACR INTRODUCTION TO CARDIOVASCULAR MRI (CMR) Cardiac MRI Mentor Cases with Advanced Clinical Correlations

» DATES:

- January 29-30, 2010 (Fri-Sat)

» LOCATION:

Salinas Valley Memorial Hospital
Cardiovascular Diagnostic Center
5 Lower Ragsdale
Monterey, CA 93940



» RECOMMENDED FOR:

Physicians (radiologists and cardiologists) and MRI technicians

- **Physicians:** Meet Level 1 and work towards Level 2 competency requirements
- **Technicians:** Hands on scanning with live patients

» COURSE DETAILS:

- Didactics in basic cardiac MRI physics
- Introduction to routine cardiac MRI protocols and scanning techniques (cine/functional imaging, phase-contrast, perfusion, delayed enhancement)
- Live case demonstrations
- Review of 50 online cases with Level 3 trained faculty
- Program development and marketing guide
- Introduction to multi-modality imaging techniques (combined approaches with volumetric CT, echo, nuclear stress testing, angiography)
- Exposure to AZE workstation and post-processing CMR techniques

» INCLUDES:

- Two days on-site plus access to 'on-line' cases for continuation of study
- Eligible for 16 hours of Category 1 CME

• INTRODUCTION TO CMR:

Two day course, Level 1 certification, 16 hours CME, 50 reviewed cases, live cases (~5), CMR starter kit (course syllabus with protocols, marketing tips, needed equipment list)

- **Post-Course Continuing Education Options:** To be discussed in class (not included in tuition)
- Price: \$1950



Primary Lecturer:

Timothy Albert, MD

Assistant Consulting Professor of Medicine, Duke University Medical Center
Medical Director, Cardiovascular Diagnostic Center Salinas Valley Memorial Hospital, Monterey CA

» To Register: Please call 1-800-728-2884 or email info@cvcta.com «